

PANORAMA PARK

2022 ACTIVITY BOOK



Panorama Park Activity Book

Welcome to the Panorama Park Activity Booklet, part of the From Weeds We Grow project. We invite you to use this book when visiting the park. Take part in activities, and share your creations on social media using #FromWeedsWeGrow and tagging @stepspublicart.

From Weeds We Grow, led by STEPS Public Art, is an ongoing public art project connecting individuals with art, nature and each other. From Weeds We Grow culminates in an interactive web app, exploring Panorama and Rowntree Mills Parks through 360 video, community storytellers, spoken word artists and poets, community-based art projects, and engaging with these green spaces through self-guided walks and activities.

To learn more, visit stepspublicart.org and follow @stepspublicart.

See you at the park!

"Panorama Park has it all, beginning with a public area shaded by oak and walnut trees where local residents can gather at picnic tables to chat or participate in public events. The park is situated next to the Rexdale Community Hub, whose member agencies use the space for many of their regular programs.

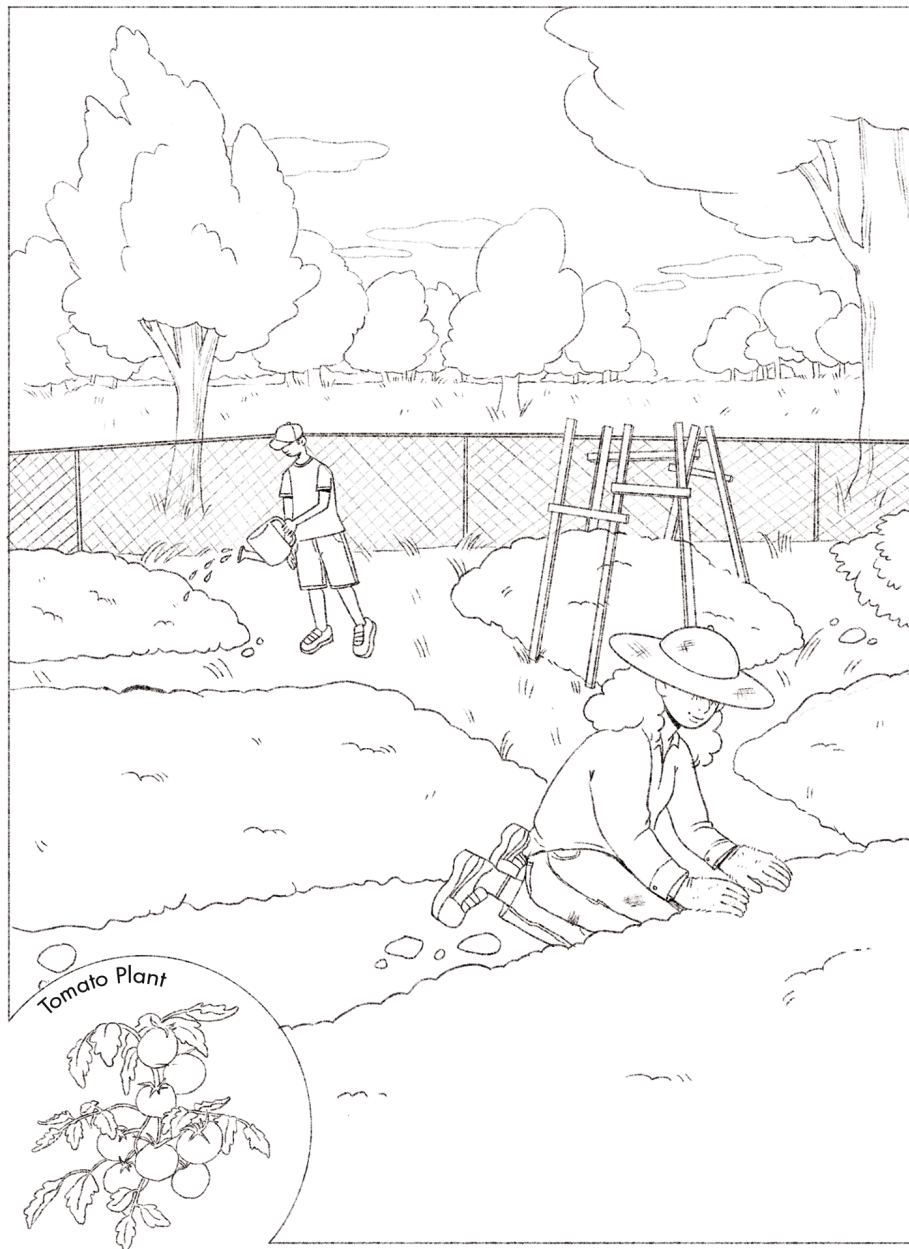
Panorama Park also has a quiet woodlot which is a quiet place for walking or bird-watching. Its beating heart is the community garden, in which residents from local high-rise buildings get the opportunity to grow fresh vegetables and exercise mind and body. The garden has served for the past ten years as a focal point for local events such as children's garden groups, agency programs and summer barbecues.

This park is also linked to the valley of the Humber River and Rowntree Mills Park, and as such is a gateway to long nature walks and many different recreational and cultural activities."

- Jim Graham, former community garden designer/program developer, nature walk leader and native plant enthusiast.

From Weeds We Grow is part of the Arts in the Parks program.
We would like to thank the generous support of





PANORAMA PARK COMMUNITY GARDEN

Draw in all of the things you would plant at the garden!



COLOURING PAGE

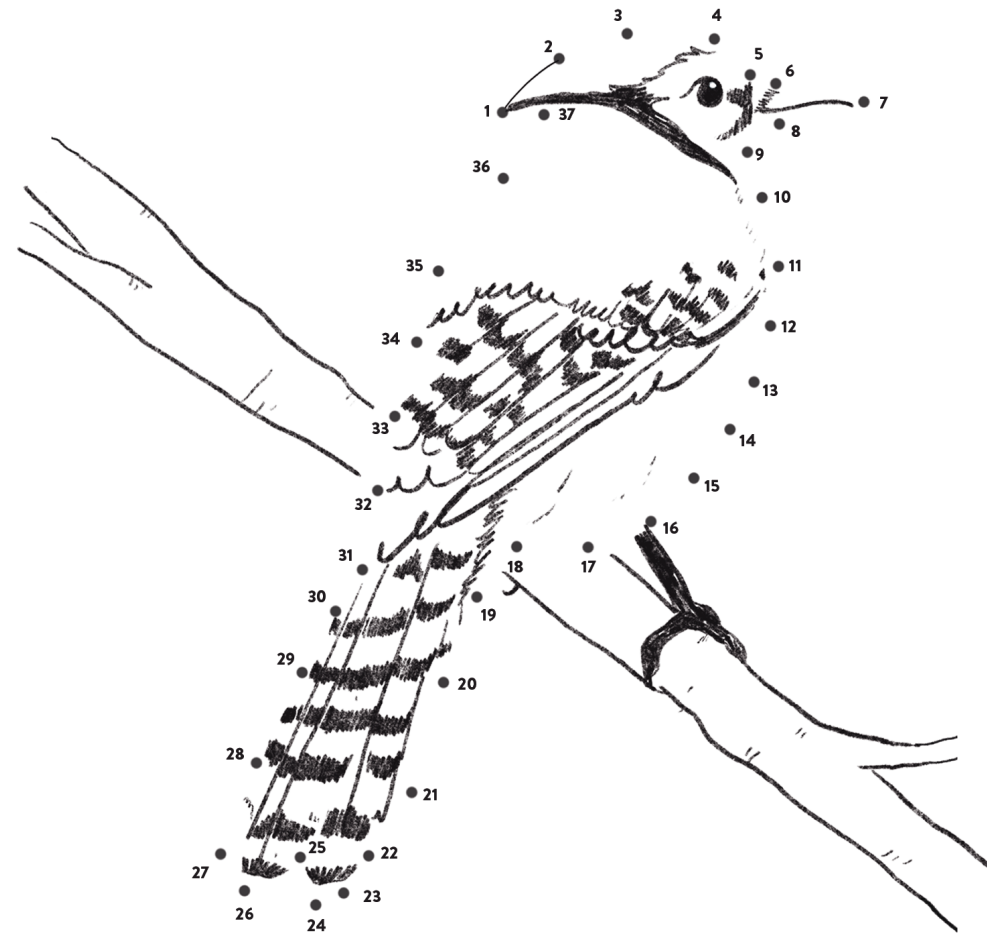
While the **Panorama Park** is a great space to enjoy the community garden, picnic with friends and visit the Rexdale Community Hub—there's a bunch to enjoy in the surrounding nature along the Humber River. It's a great chance to see some wildlife, take a stroll or ride your bike. What will you see on your visit?



SPOT THE DIFFERENCE

Answer: 6
Hint: Smiles!

CONNECT THE DOTS



Connect the dots to complete this Blue Jay. Did you know that they're not actually blue? Melanin, the same stuff found in human hair and skin, is a brown pigment – and it is the pigment found in Blue Jay feathers. So why are they blue? The answer is something called refraction: it's how the light hits and reflects their feathers.

Eye-Spy...

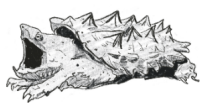
Can you find all ten species in this picture?



Dryad's
Saddle



Mink



Snapping
Turtle



Painted Lady
Butterfly



Cucumber
Magnolia



King Fisher



White-Tailed
Deer



Virginia
Opossum



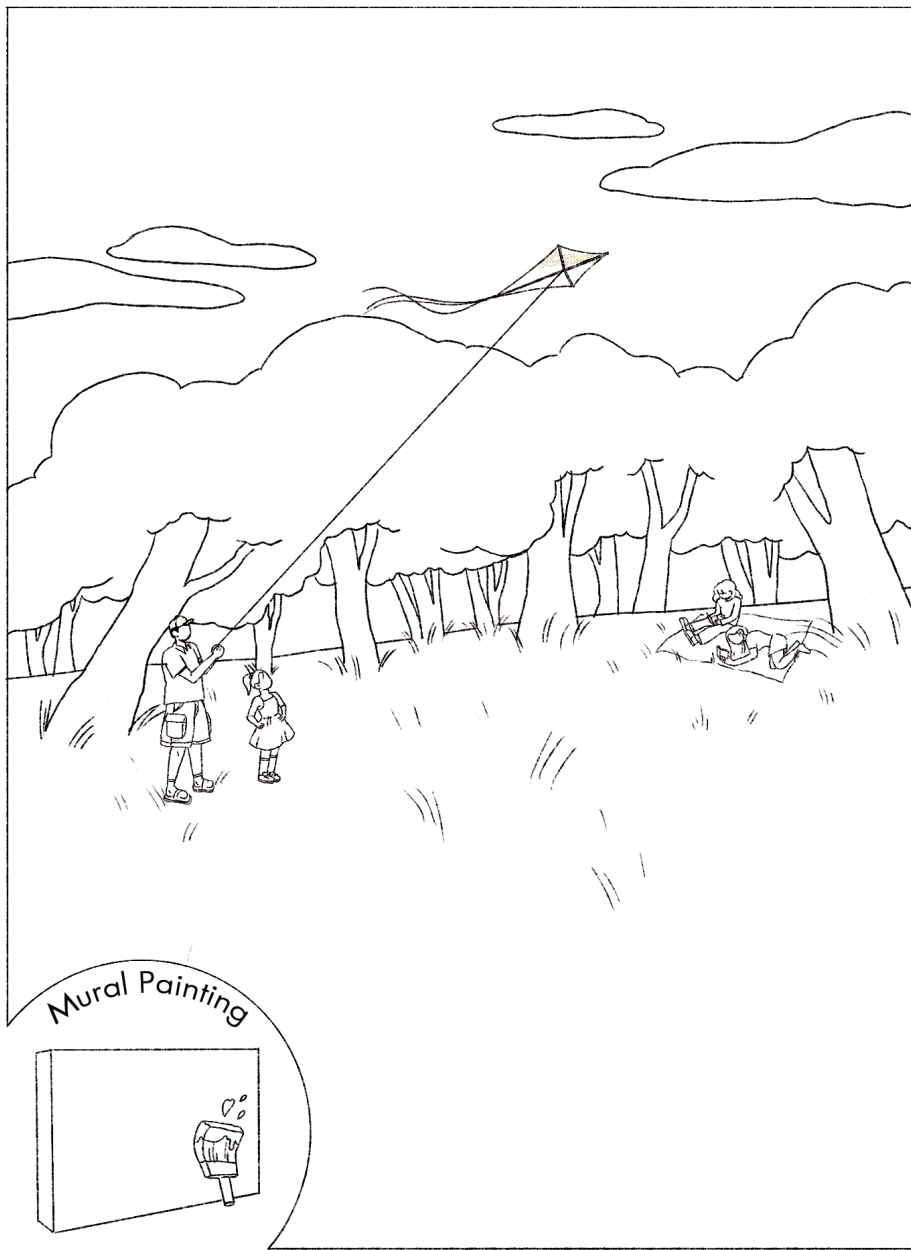
Ebony Jewelwing
Damselfly



Tulip
Tree

There's a lot of wildlife to see in the nature surrounding

the Panorama Park—some are harder to find than others!



WHAT WOULD YOU LIKE TO SEE AT THIS PARK?

The park's open space is a great opportunity for a variety of different features and activities. Draw what you would do with this space!

HOW TO DRAW A FROG

STEP 1



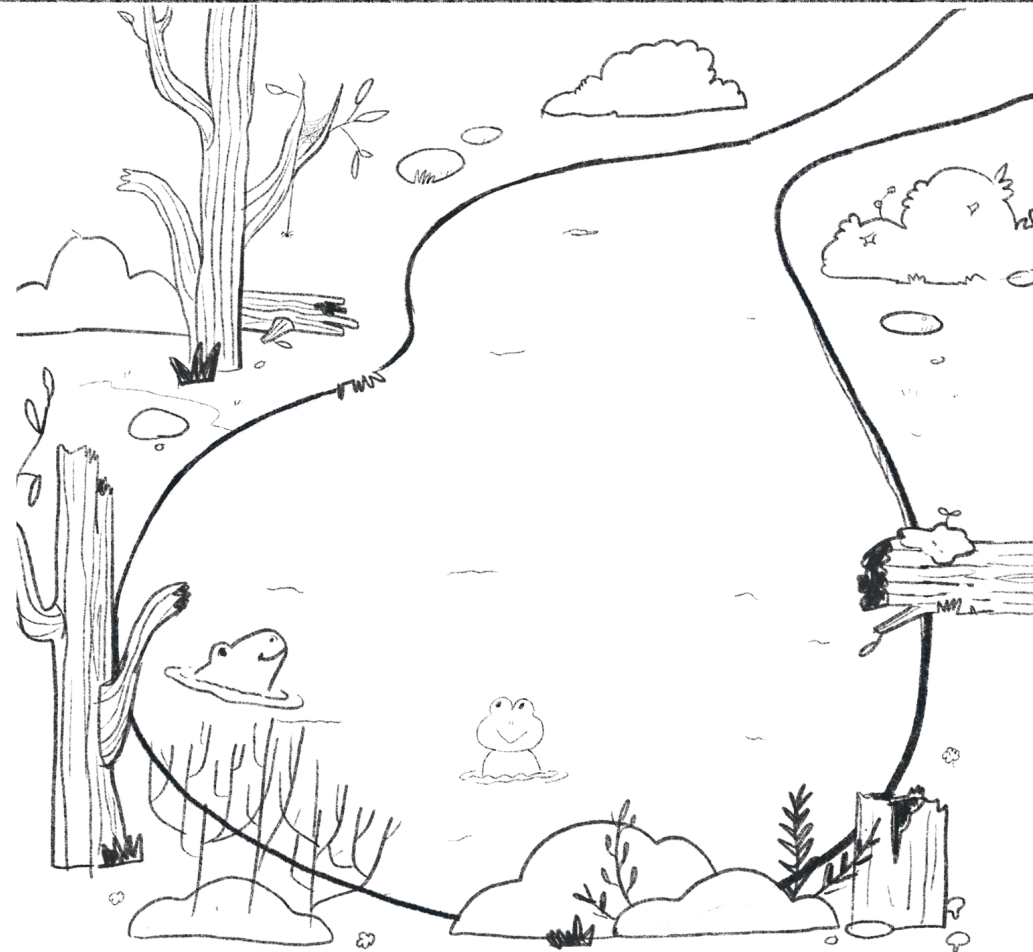
STEP 2



STEP 3

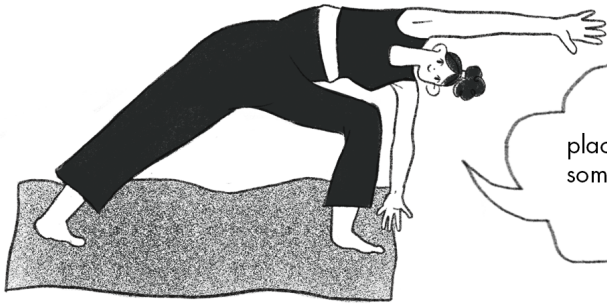


STEP 4

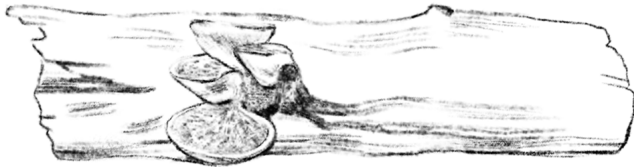


Indicator species are living things that can teach us something about the environment. For example, a loud sing-song of many frogs tell us that the water is clean and the perfect place for the frogs to party! **Draw more frogs to show the water is clean!**

Did You Know....?

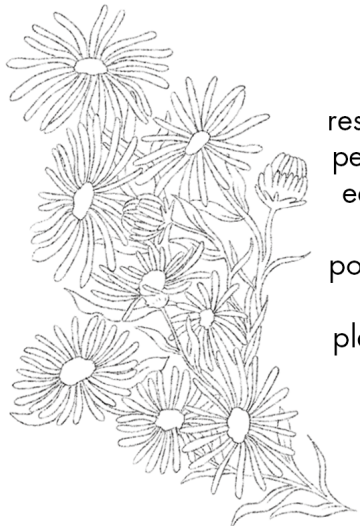


The park is a great place to get moving and catch some fresh air! **How do you like to move?**

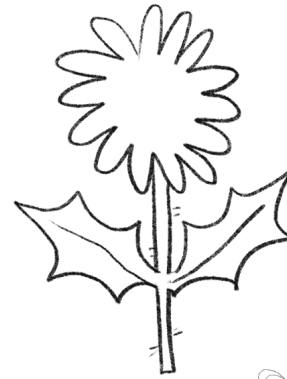
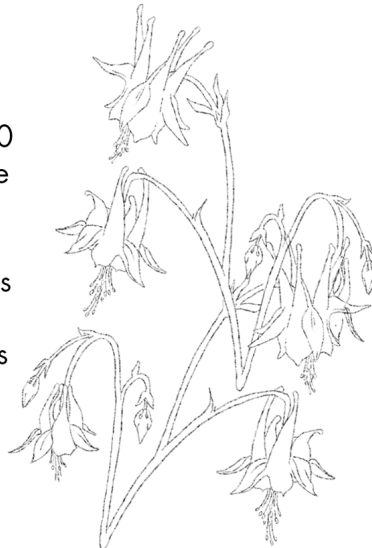


Dryad's Saddle

Commonly found on logs and stumps of deciduous trees. This mushroom is widespread throughout North America, Australia, Asia and Europe. The name references a tree nymph from Greek mythology.



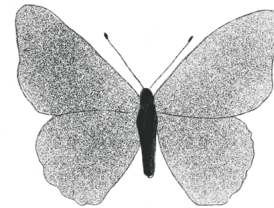
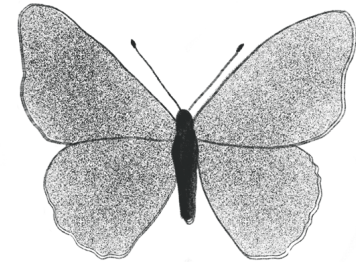
Pollinators are responsible for over 30 percent of the food we eat. We can help the sharp decline of pollinator populations by planting native plants like these Asters and Beardtongue!



Dandelions are safe to eat! If grown without pesticides, they can make a great addition to pastries and salads. Thanks to the pesticide ban on Finch Avenue, there's many along the way to Panorama Park for safe foraging!



There are so many types of wildlife at and in the vicinity of Panorama Park, including different types of **butterflies**. There even used to be an annual Butterfly Festival that took place at this park.



Have you been to the **Rexdale Community Hub**? The RCH is a healthy and sustainable community where the residents are empowered and engaged.* There are many services and support available: there's something for everyone! You can learn more at: www.rexdalehub.org.

About STEPS

The STEPS Initiative is a Canadian-based public art organization that develops one-of-a-kind art initiatives and engagement strategies that transform public spaces. We are responsible for Canada's largest and most community-engaged public art initiatives.

Together with our partners, we transform urban areas into vibrant public spaces, helping artists, community organizations, BIAs, and developers push creative and technical boundaries - breathing new artistic energy into our public spaces.

For more information on STEPS or to get in touch, visit stepspublicart.org and follow @stepspublicart



This activity booklet was designed by:

Debbie Woo
debbiewoo.com
@woohyunji



Jesseca Buizon
jayymadethis.com
@jayymadethis

